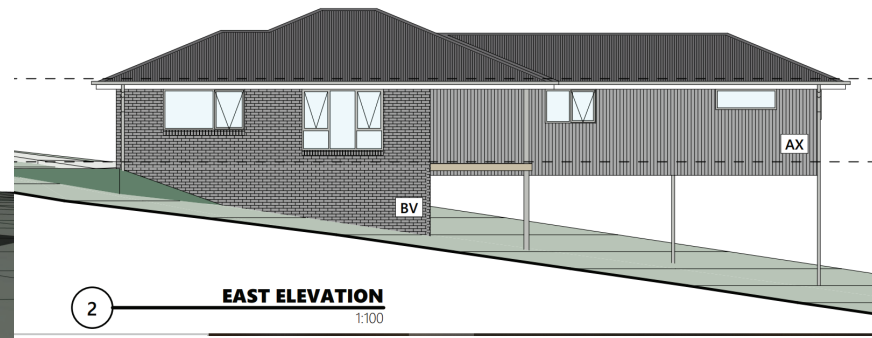
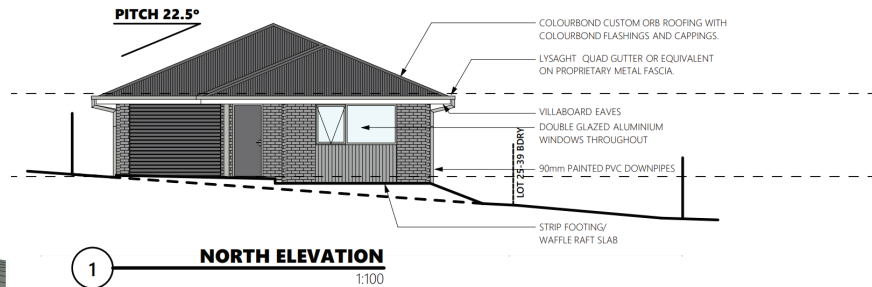
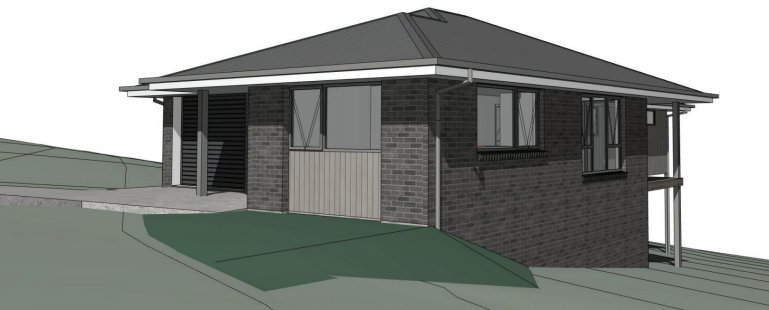


125+ sqm / 3 bedroom/2 bathroom From \$499,000



Standard Inclusions

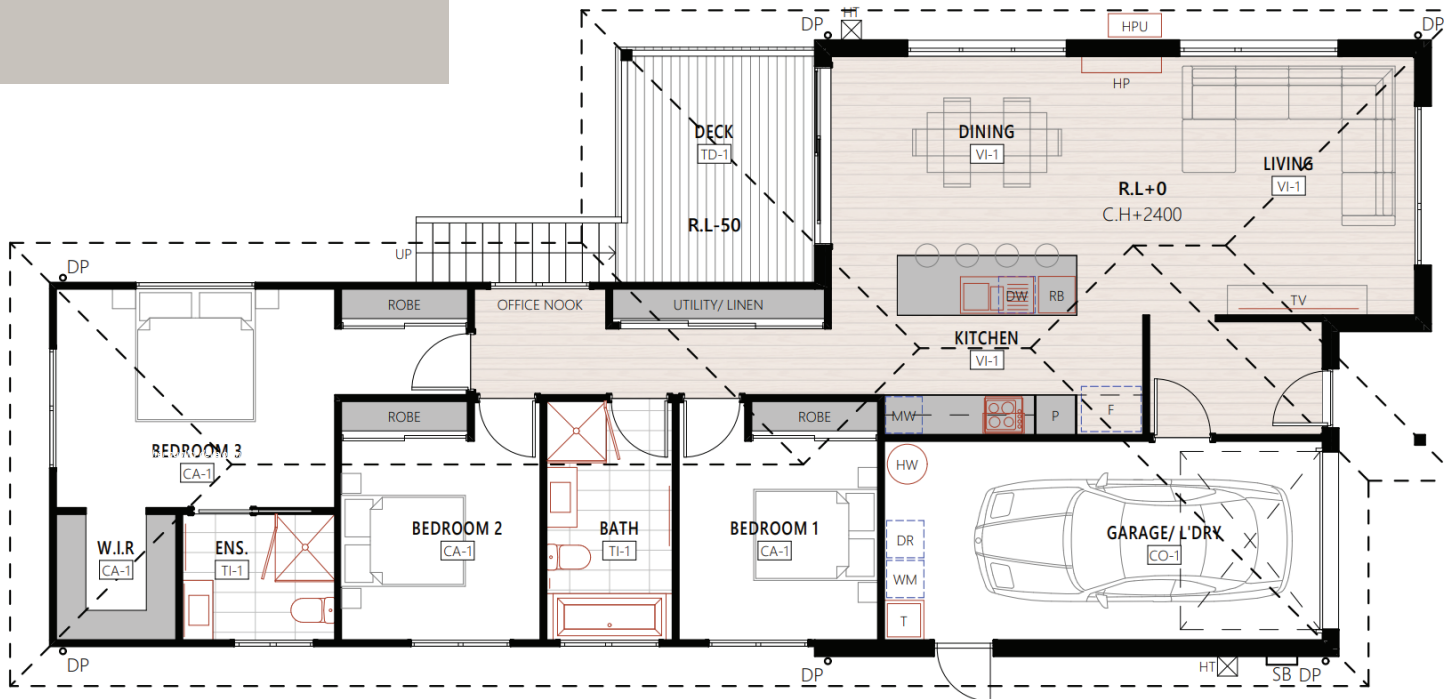
Ideal for first home-buyers, this compact 3 bedroom/2 bathroom floorplan offers great living spaces and home owner value with quality fittings, all at a very affordable price. All bedrooms have built-in wardrobes, there is a separate bathroom and master bedroom ensuite.

The kitchen and bathrooms are fitted out with contemporary, quality HAFELE appliances:

Included in this standard package:

- 7KW brand name heat pump
- Hafele kitchen appliances, oven, hotplates, rangehood dishwasher
- Hafele door furniture, electronic front door fittings

DIAL RANGE DESIGN FLOORPLAN



Features

	Bedrooms:	3
	Bathrooms:	2
	Garages:	1
	Land size:	503-594 sqm
	House size:	125+ sqm



For more information call:

Craig Heppell 0400 180 515



ONLY FOR the first 12 FIRST HOME BUYERS:
when you purchase any of our House & Land
packages you will receive our First Home Buyer
Vouchers valued at \$9000 from Begents, IGA and
Anaconda-you choose!



Another great
Tasmanian
development from
Red Panda
Property Group